



Welcome to Year 4
Meet the Teacher



Staff in Year 4

Whiteread

Miss Bromley

Kapoor

Miss Maxim

What does my child need to bring?

- Coat
- Book Bag with a reading book once they have been given one
- Water bottle with their name on it
- Packed Lunch if they are packed lunch. Please refer to the food policy for guidance on items that should not be brought in. E.g. crisps/chocolate.

No toys or stationary should be brought in from home, unless specifically requested by class teacher.

P.E

Whiteread

Thursday – Invasion Games

Friday – Swimming

Kapoor

Tuesday – P.E Invasion Games

Friday – Fitness

Children should bring the appropriate kit for their lessons:

Swimming: swimwear, swim hat and a towel

P.E Kit: shorts/joggers, t-shirt, sports trainers

Changes to the Weekly Timetable

- The children will receive music and art lessons on a Monday taught by Jeannie and Siobhan. Each class will have either art or music and then swap the following week

Cover :

- Miss Bromley will be covered from 2:30 – 3:30pm every Tuesday by Mrs Baptiste.



TalkforWriting™

- Across the school we teach literacy through our Talk for Writing program.
- Enables children to imitate the key language they need for a particular topic orally before they try reading and analysing it.
- Through fun activities that help them rehearse the tune of the language they need, followed by shared writing to show them how to craft their writing, children are helped to write in the same style.
- You can find out more information at www.talk4writing.com/about



In years 3 to 6, we teach the White Rose maths program to the children. This approach to teaching maths ensures that children develop a deeper conceptual understanding over time. This is done through concrete and abstract learning opportunities whilst also having the opportunity to apply mathematical concepts to a wide range of problem solving and reasoning problems.



- Sounds-Write is a quality first phonics programme and is how we teach reading, spelling and writing.
- Children receive Sounds-Write lessons four times a week focusing on spelling.
- It will also be used as an intervention or catch-up programme.

Destination Reader is the KS2 program to teach reading.

Takes place Tuesday to Friday at the same time. 10.30am to 11.15am.

Destination Reader focuses on various strategies that help children to become more fluent in their reading, and helps develop a love of reading.

There is lots of reinforcement of key words because children are reading them everyday.

The books are enjoyable stories which encourage children to read for pleasure.

Wider Curriculum

- The children will receive a rich curriculum consisting of History, Geography, PSHE, Science, RE, PE, Art, Music, Computing, Food Education, Design and Technology and Spanish.
- We will be teaching these subjects mainly in the afternoons and we look forward to developing the children's independence and teamwork and building on prior knowledge.



Accelerated Reader

Accelerated reader is used in KS2 to promote reading at home and within school

- MOST books within school have an AR code on them
 - Children can use their own logins to complete a quiz on Accelerated Reader
 - If your child achieves 80% or more, they will earn a certificate.
 - Please note: Not all books are on the Accelerated reader system, so your child can not be tested on all books they read.
-
- Children will have the opportunity to complete Accelerated reader quizzes using a class tablet.

Assessment (Years 3 to 6)

- Children are assessed daily in lessons through observations, marking and class discussions.
- Children complete arithmetic papers in class during Friday maths lessons.
- Formal assessments will take place twice a year at the end of the Autumn and Summer terms.

National Testing

- At the moment all National Testing is planned to go ahead.
- This includes:

Year 4 Multiplication Check – June 2024

Weekly challenges

- Friday – Spelling challenge (these will be sent out on a Friday, after we have explored them as a class all week)
- Times tables challenge (children progress through all the times tables at their own speed and earn badges)

Educational Visits / Trips and Performances

We are hoping to have lots of fun trips this year! Previously we have visited the Science Museum, the National Gallery, Railway Fields



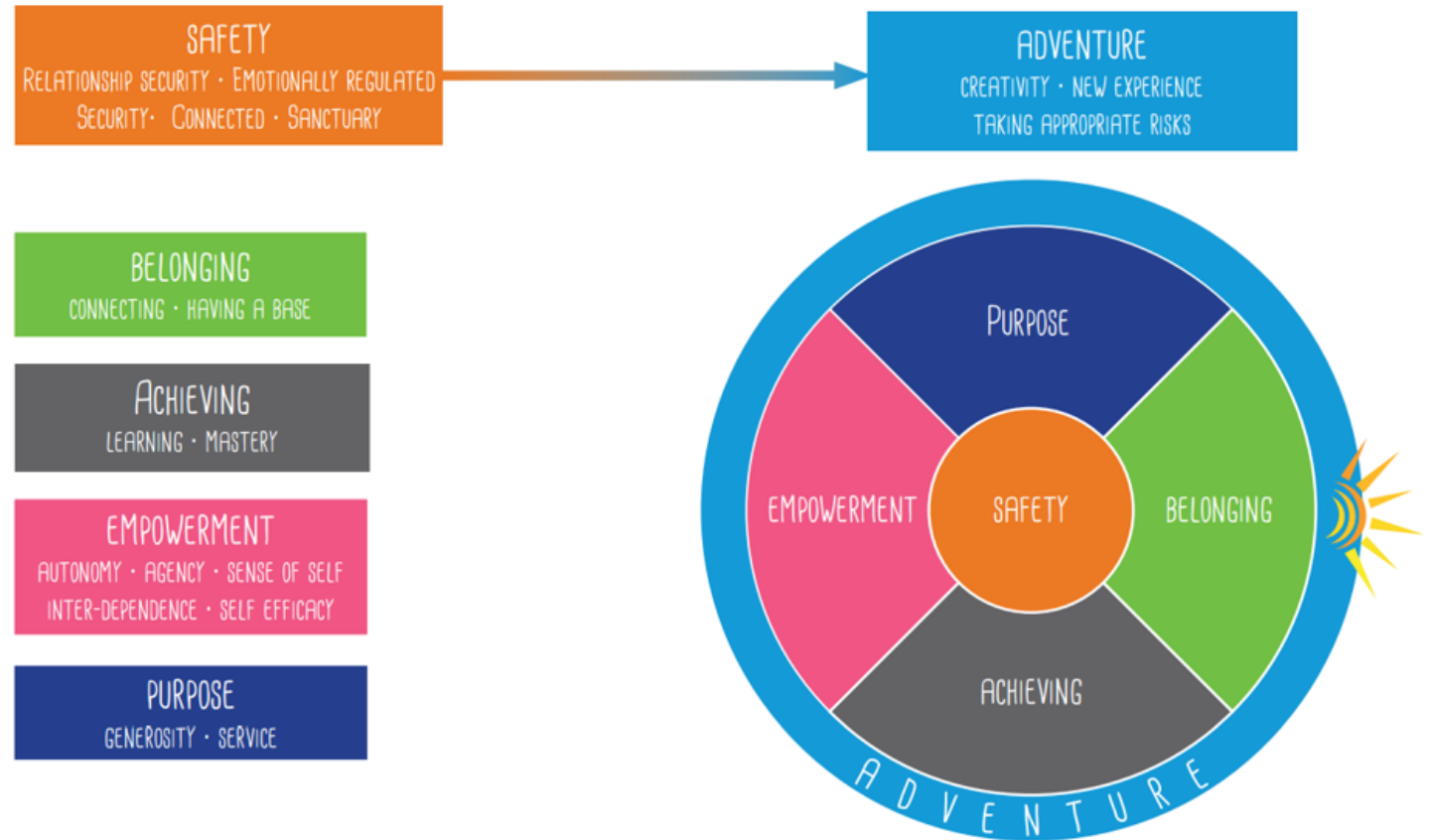
Behaviour

The school has recently adopted the Anchor Approach towards behaviour.

This means that there is no longer a traffic light system in the classroom.

Children will receive reflection time if they are not following the school rules that are in place to keep everyone safe.

Resilience Wheel



Class Dojo

The school will continue to use Class Dojo's as individual rewards.

Mr Smith sent the following message regarding class dojo in last weeks newsletter:

“Last week we trialled the use of Class Dojo to communicate with parents sharing images and videos of the children in class. The number of parents who signed up for this was very low and does not justify the time required by administrative staff to set up and maintain accounts or the time which teachers spend taking pictures / videos etc and uploading them. We believe that teaches time is best spent teaching the children and have therefore decided not to offer this service in future but will continue to communicate about what your child is learning and exciting events which are communicated to you via weekly newsletters, homework letters and curriculum newsletters.”



Pick Up

- If on occasions you arrange another parent / family friend / family member to collect your child, please make sure you let the office know by lunchtime (1.30pm) where possible. We will not be sending children home with adults other than you if we don't get a clear message from office staff.

School Uniform



All children are expected to wear school uniform:

- Campsbourne t-shirt, polo shirt, jumper or cardigan.
- Sensible and comfortable shoes.

Please label all items of clothing!

Q&A